

OTHER SERVICES:

WATER FACILITIES ENGINEERING

WASTEWATER ENGINEERING

MUNICIPAL ENGINEERING

STRUCTURAL ENGINEERING

TRAFFIC & TRANSPORTATION

PLANNING & SITE DESIGN

ENVIRONMENTAL ENGINEERING

CONSTRUCTION ADMINISTRATION & OBSERVATION

TECHNOLOGY

SURVEYING

GRANTS & FUNDING

GEOGRAPHIC INFORMATION SYSTEM

DEPARTMENT MANAGER
JENNA FIACCO



jfiacco@carrollengineering.com



(215) 343-5700 ext. 254



www.carrollengineering.com



Bucks County Corporate Office:
949 Easton Road
Warrington, PA 18976



Chester County Office

433 Lancaster Avenue
Suite 200
Malvern, PA 19355
610-489-5100

Montgomery County Office

630 Freedom Business Center
Third Floor
King of Prussia, PA 19406
610-572-7093

Northampton County Office

101 Larry Holmes Drive
Suite 201
Easton, PA 18042
610-989-4940

Somerset County Office

105 Raider Boulevard
Suite 206
Hillsborough, NJ 08844
908-874-7500



GEOGRAPHIC INFORMATION SYSTEM

Connect With Us On Social Media:



RAPID RESPONSE TIMES
EXCEPTIONAL SERVICE
ADAPTIVE TO CHANGING NEEDS

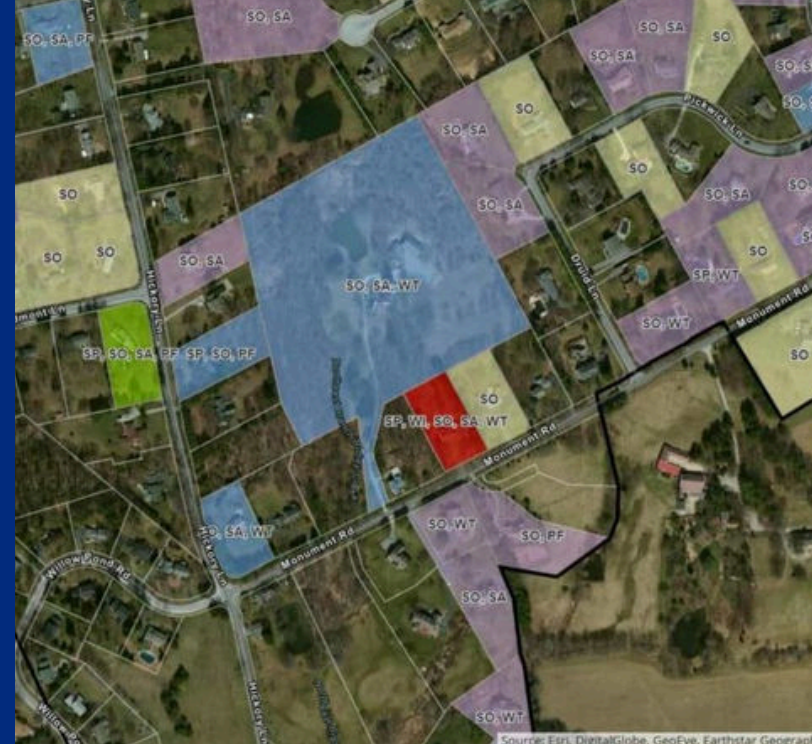
WELCOME TO OUR GIS DEPARTMENT

Carroll Engineering's geographic information system (GIS) department provides services for various spatial applications. Geographic cartography creation, database management, custom application development, and data analysis support better planning by providing the knowledge necessary to make more informed decisions with its interactive mapping and databases; GIS also lends itself to enhanced data storage for improved asset management. As an ESRI Business Partner, Carroll Engineering can implement many solutions to help solve problems, manage data, fulfill citizen requests, and analyze complex scenarios within your organization.



WHAT WE DO

- Field Data Collection
- Data Conversion/Base Mapping
- Data Analysis/Custom Cartography
- Needs Analysis/Implementation Planning
- Software Training and Support Services
- Asset Management Services
- Custom Product Development
- ESRI Solution Implementation



"Quality is a state of mind and our driving force here at Carroll Engineering Corporation is to continuously provide the best level of experience to all of our clients. We strive to exceed expectations, build long lasting relationships, and utilize our projects to better each of our surrounding communities. Our departments within the firm act as consultants to each other, thus integrating all our knowledge, skills, and experience to ensure the most practical, efficient, and sophisticated solutions to every challenge. We identify and address potential problems at the earliest planning stage, then employ our innovative design approach for preventing difficulties and bringing our clients' projects to their satisfying completion. Thank you for entrusting our team with your projects and communities. We sincerely look forward to seeing and sharing in your success for years to come."

~Allen B. Mason P.E., President

