

# SiteLines

From My Chair .....	2
Families Enjoy the Benefits of Elevation .....	2
Mark Kray Joins CEC .....	3
FYI from CEC .....	3
Accolades .....	3
Scholarship Winner .....	4

## PROJECT SPOTLIGHT

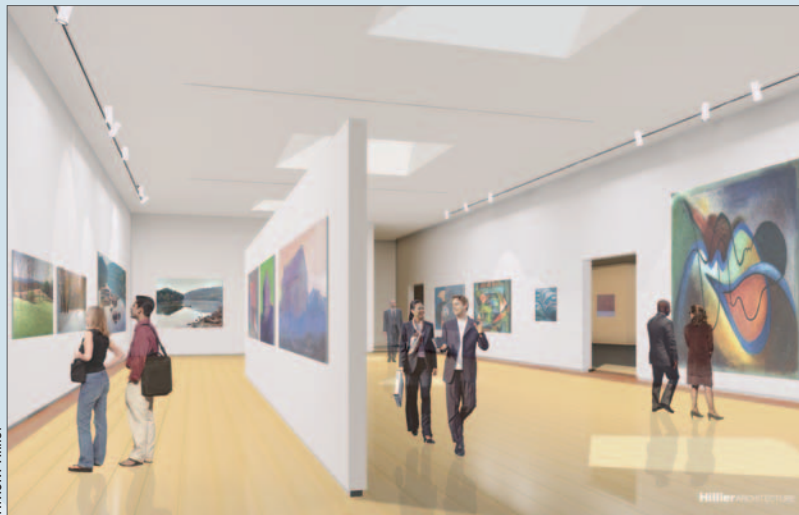
### CEC Supports the Michener Art Museum in 'Building on the Vision'

Founded in 1988 by a group of generous, civic-minded Bucks County residents, the James A. Michener Art Museum has become one of the most important and fastest-growing cultural centers in Southeastern Pennsylvania. In recent years, the museum has faced the reality that it has outgrown its current facilities on South Pine Street in Doylestown.

"Many works in our collection must remain stored out

Ann and Herman Silverman Pavilion into an education complex, and the renovation and expansion of existing event space.

The new wing will include a 5,000-square-foot gallery on the upper level that will allow the Michener Art Museum to host major touring national exhibits. What's more, this space will also be suitable for subdividing for use with traveling exhibits, as well as with objects from the permanent collection.



RMJM Hillier

of public view, and our current vault is crammed with objects. We have no room for further significant acquisitions," explains Bruce Katsiff, Michener Art Museum Director/CEO. "In addition, we don't have adequate space to host many national touring exhibitions – limiting what we can offer to our members and visitors."

With those and other needs in mind, the Museum initiated "Building on the Vision: The James A. Michener Centennial Campaign." This campaign will ultimately support a major building expansion that includes a new, two-level wing, the conversion of the

"Our 'Building on the Vision' campaign is positioning the Michener Art Museum to meet the demands of this rapidly expanding and increasingly diverse community," Katsiff says. "The projects will build upon the vision of our founders, preserving our artistic heritage while reaching out to multiple audiences with our programs."

The Michener Art Museum selected RMJM Hillier as architect and CEC as site/civil engineer. Working with the

team, CEC's H. Joon Pak, P.E., and his colleagues performed the land development design and also prepared all documentation required for municipal permits.

"We've been very pleased with the professionals from Carroll Engineering," Katsiff notes. "They assisted us in obtaining speedy approvals for this project from the Doylestown Borough." With that process complete, the museum is planning to break ground this fall.

*For more information about CEC's Site Planning and Design services, please visit [www.carrollengineering.com](http://www.carrollengineering.com).*

## From My Chair

Harry J. Barford, Jr., P.E.

Carroll Engineering Corporation's New Jersey office is on the move – literally.



Following our acquisition of B2A/SURVSAT, Inc. in August 2005, our team of 13 continued working from B2A's space in the Hillsborough Business Center and also retained the company name. This fall, we're taking the steps needed to complete our integration of the firm.

First, we're relocating to 4,000 square feet of Class A office space on Raider Boulevard, also in Hillsborough. This beautiful facility reflects CEC's image as a respected, professional engineering firm.

Just as important, we're now doing business in the Garden State not as "B2A Consultants, a Carroll Engineering company," but as simply Carroll Engineering.

We're proud of the contributions our Hillsborough team has made and continues to make. And we're excited about these changes, which position us to expand upon the engineering and survey work being done in Hillsborough – and to enhance our professional services offerings to clients throughout New Jersey. •



On or around October 1, CEC's New Jersey branch will be located at 105 Raider Boulevard, Suite 206, Hillsborough, NJ 08844. Our phone number (908-874-7500) and fax number (908-874-5762) remain the same.

## PROJECT SPOTLIGHT

# Families Enjoy the Benefits of Elevation

Since 2002, CEC has played a key role in the Bucks County commissioners' program to elevate homes and businesses in the Neshaminy Creek flood plain. The project's goal: to help these homeowners avoid the extensive damage incurred as a result of Hurricane Floyd in 1999 and Tropical Storm Allison in 2001.

To date, CEC has overseen the elevation of 35 homes in Bristol Township and Hulmeville Borough. As CEC's Tom Whye, P.E., explains, "Each structure is elevated so that it is about 1.5 feet above the 100-year flood plain. In some cases, homes have been elevated as much as 11 feet."



For each house, CEC conducts in-person assessments and develops detailed plans. For some houses, those plans involve the addition of a utility room and/or replacement of a deck. Once plans are finalized, CEC solicits bids from contractors and then selects one to do the work. Typically, construction takes 45 to 60 days. CEC manages the contractors and serves as homeowners' primary point of contact. And for homeowners in the midst of an elevation, CEC is a welcome resource and advocate.

### Case in point: the Amodei family

Joe and Helen Amodei are the original owners of their Hulmeville home. They've lived in the house for 45 years, raised five children there, and now share it with their daughter, son-in-law and young granddaughter. And since the property backs on the Neshaminy Creek, this family has experienced more than their fair share of floods. Some have been worse than others, but Floyd was worst of all.

"During Floyd, we were out of our house about six weeks," Joe says. "We kept trying to come back, but every time we moved something, we'd find more damage." In all, Floyd caused some \$75,000 worth of damage and made the house a candidate to be elevated.

In 2003, CEC guided Joe and Helen through the process of elevating their home, including adding a utility room for the heater, washer and dryer and replacing their two decks. Joe says he turned to CEC for assistance at various stages of the project, which took 45 days, and CEC helped resolve every issue.

"They did a fine job," Joe says. "They're great people, and were very responsive."

This fall, as the four-year anniversary of the elevation approaches, Joe remains enthusiastic about its success: "Since we've been elevated, it's very easy. You let [the water] come in, let it go out, and then you get a hose and spray the concrete floor." The worst flood since the elevation brought 14 inches of water to the basement – but no damage to the house or aggravation for Joe and Helen.

In fact, these days, during heavy rains Joe says he enjoys standing on his elevated deck and watching – but no longer worrying about – the water pouring down beneath him.

*For more information about CEC's Structural Engineering services, please visit [www.carrollengineering.com](http://www.carrollengineering.com).* •

# Kray Joins CEC's Traffic and Transportation Department

CEC is pleased to announce that Mark L. Kray has joined us in the Traffic and Transportation Department at our corporate office.

Kray, a traffic signal specialist, recently retired from PennDOT, where he enjoyed a 35-year career at the Department's District 6-0 office. Prior to his position



Mark L. Kray

managing the Municipal Signal Design section of the Traffic Unit, Kray worked in the Contract Signals Section and Safety Improvement Section (SIP).

While at PennDOT, he managed the issuing of traffic signal permits for all traffic signals, school warning devices, flashing beacons and flashing warning devices. Some of these included the review of highway occupancy permits where applicable. Additionally, he managed the design of new and revised traffic signals for the 214 municipalities in District 6-0 – which includes Bucks, Chester, Delaware and Montgomery counties.

With degrees from both Drexel and The Pennsylvania State Universities, Kray also managed eight employees and was an expert witness for PennDOT litigation.

*For more information about CEC's Traffic and Transportation services, please visit [www.carrollengineering.com](http://www.carrollengineering.com).* •

## FYI from CEC

- **Batter up:** This summer, CEC employees competed with other area engineering firms not just in business, but also on the ball field. Nearly 20 employees participated on the CEC softball team, which played weekly and used Palomino Park in Warrington as home field. CEC's Jen Bilton was captain. If you missed this season's games, stay tuned for updates on next year's line-up!
- **Stop by our booth:** This fall, CEC has exhibited or will exhibit at numerous events, including Berks County Association of Township Officials on October 18 in Temple, Penn.; and the NJ State League of Municipalities from November 12 to 15 at the Atlantic City Convention Center.
- **Guest speaker:** Executive Vice President Ken Heydt was a guest speaker at the Pennsylvania Municipal Authorities Association's 2007 Annual Conference in State College. In his presentation, "Emerging Issues for Authorities: 2008 and Beyond," he discussed the impact of capital, operation and maintenance costs to municipal authorities as a result of the total maximum daily limits (TMDL) being proposed for many streams within the Commonwealth of Pennsylvania.
- **More to come:** CEC's MuniLogic software is coming soon.

## Accolades

- Congratulations to **Amy Kaminski, P.E.**, on her promotion to Traffic and Transportation Department Manager.
- Kudos to **Steve Hartman** for earning certification as a Professional Engineer. Hartman works for CEC's Authority-Municipal Department.
- Congratulations to **Bill Buzby** and **Tom Fik** of the Hillsborough office for earning Certified Municipal Engineers (CME) certification.

## SCHOLARSHIP WINNER

# Daniel Anderson receives CEC's 2007 scholarship, begins studies at Penn State

Daniel Anderson, a 2007 graduate of Central Bucks High School East, is the recipient of this year's Carroll Engineering Corporation Scholarship. The tuition grant, worth \$1,000 and administered through the Central Bucks Chamber of Commerce, is awarded annually to a local graduate who intends on studying in the field of engineering at the post-secondary level.

This summer, Anderson got a jumpstart on his college career through the Pennsylvania State University's Learning Edge Academic Program (LEAP). This fall, he is continuing his studies at Penn State's University Park campus, where his coursework has included engineering design, chemistry, mathematics,

economics and physics.

Long interested in the mechanics of gadgets, Anderson built a working Rubik's Cube out of 27 acrylic blocks and 108 neodymium magnets while a student at CB East. He also completed a rigorous academic curriculum, including Advanced Placement Physics C: Electricity and Magnetism, which, in his application, he called "the most interesting class I've ever taken."

Anderson was awarded a full scholarship to Temple University's Engineering Enrichment Program in the summer of 2006. He earned three college credits and a grade of "A."

Outside the high-school classroom,



Anderson participated in CB East's Ping Pong Club and volunteered through his church. He also enjoys photography, computers, cars and brain teaser puzzles and has traveled extensively – including trips to North America, Europe, Australia and the Caribbean.

He is the son of Rae and Terri Anderson and has one sister, Autumn, a junior at Central Bucks High School East. •



949 Easton Road  
Warrington PA 18976

